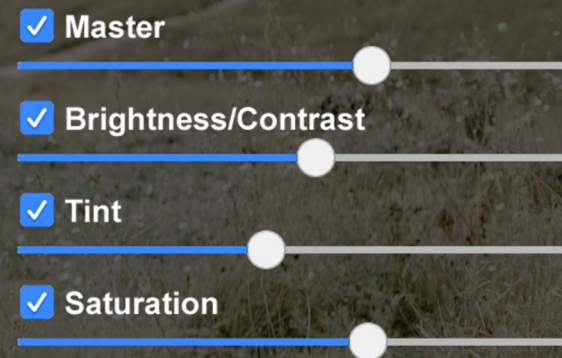


Picture Instruments

PRESET ADJUST

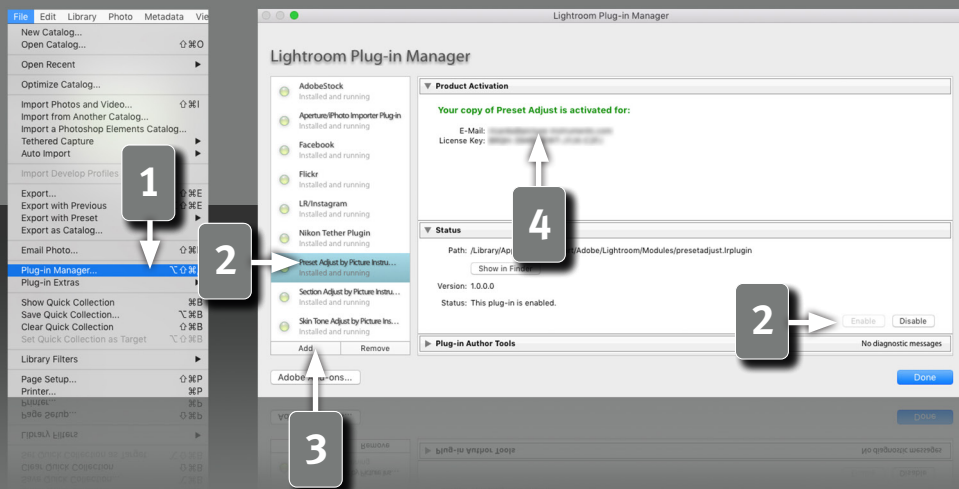


Manual



PRESET ADJUST

Manual



2

Requirements

This plugin works with Lightroom version 6 and newer. You need the classic version of newer Lightroom versions, since the plugins aren't supported in the cloud version.

Installation and plugin activation

- 1 The plugin will appear in the Lightroom Classic "Plug-in Manager" after the successful installation. (File->Plug-in Manager).
- 2 If the LED next to the plugin is gray, the plugin has to be activated first in the status section.
- 3 In rare cases the plugin won't appear in the "Plug-in Manager" after the installation. In that case you have to add it manually. You do that by clicking on the "Add" button, after which a dialog window will open, where you can select the plugin.



After the installation you can find the plugin under:

Mac:

Library/Application Support/Adobe/Lightroom/Modules

Windows:

%appdata%/Adobe/Lightroom/Modules

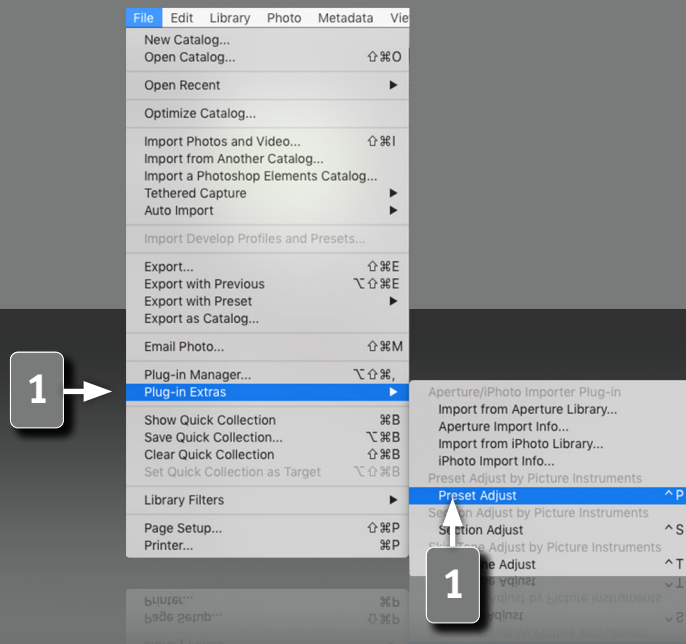
Maybe you have to restart Lightroom.

License activation

- 4 After the installation and activation of the plugin you have to enter your personal license code in combination with your associated email address. The "Plug-in Manager" can be closed after the successful activation of the license.

PRESET ADJUST

Manual



3

The Preset Adjust Plugin

Picture Instruments Preset Adjust is a plugin for Lightroom. The current Lightroom settings can be easily adjusted with 6 controls for every kind of editing, so you can achieve an optimal result quickly for every picture. Besides the complete editing you can use a separate control to adjust all exposure & contrast compensations, all color tones, all saturation settings as well as the current vignetting. During the adjustments you can take into account the white balance or you can ignore it.

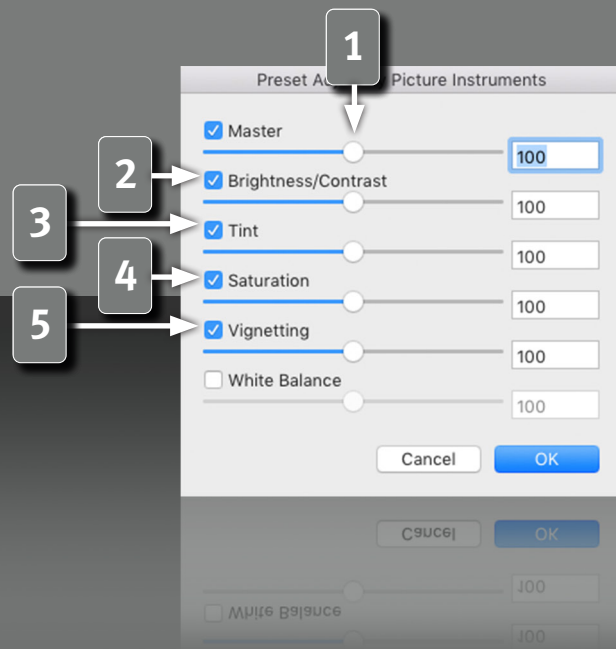
Opening the plugin

1

The plugin can be used via the shortcut CTRL + p (shortcuts only work on Mac OS X) or via the main Lightroom menu: File-> Plug-in Extras.

PRESET ADJUST

Manual



Preset Adjust Control

1 With the Preset Adjust plugin you can either adjust all current Lightroom parameters together via the master control or you can adjust the parameters of the various effect categories with the corresponding sliders.

All plugin controls use a scale from 0% to 200%. Values over 100% amplify the current Lightroom settings and values under 100% soften them.

If you use the master control to adjust the settings, then you can lock the different effect categories by deactivation the individual check boxes. The master control moves all the other controls by the same value to preserve a previously configured offset between the different sections.

2 Brightness/Contrast doesn't just adjust the tonal value parameters, but also the overall RGB curve, the parametric curves and also the luminance controls in the HSL section.

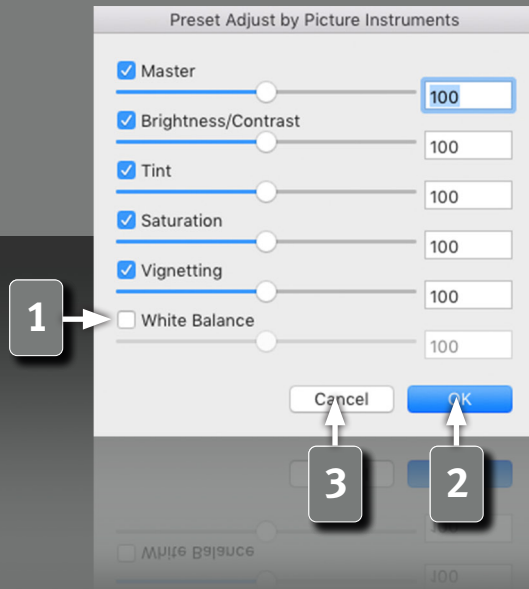
3 Tint adjusts the individual R, G and B curves and also the hue controls in the HSL section as well as the split toning saturation and the camera calibration.

4 The saturation control not only controls the general dynamic and saturation, but also the saturation controls of the HSL section.

5 If the image has a vignetting, this can be increased or decreased using the vignetting control.

PRESET ADJUST

Manual

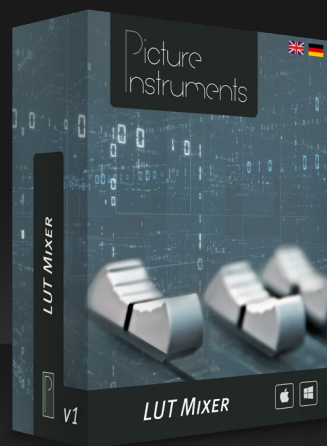


1 The check box for the white balance is by default not checked, because the white balance is usually only used to make the picture neutral. If the white balance is needed for the creative picture editing, then you can activate this check box.

2 The changes can be applied by clicking "OK", after all the adjustments were made.

3 "Cancel" resets everything to the state before the plugin was opened.

Picture Instruments



www.picture-instruments.com