

# Picture Instruments

*SECTION ADJUST*

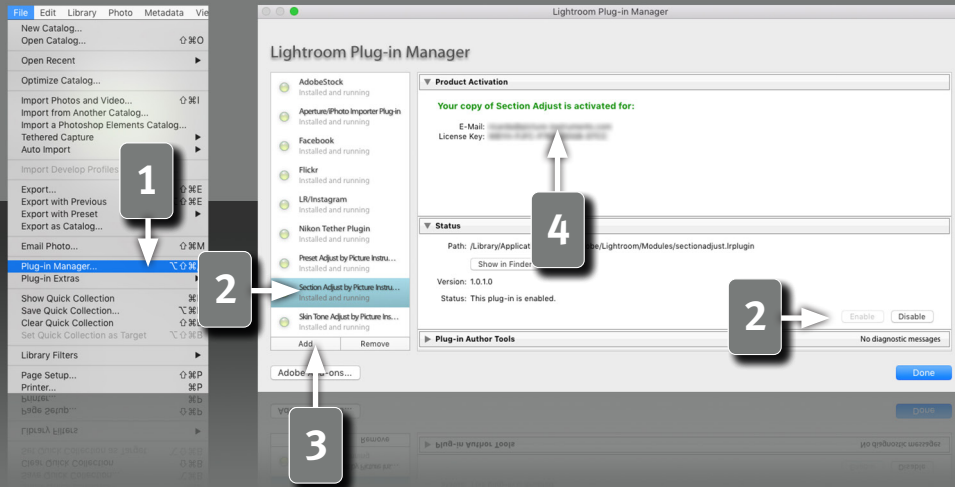
- ☒ Master
- ☐ White Balance
- ☒ Tone + Presence
- ☒ Vibrance + Saturation

## Manual



# SECTION ADJUST

## Manual



2

## Requirements

This plugin works with Lightroom version 6 and newer. You need the classic version of newer Lightroom versions, since the plugins aren't supported in the cloud version.

## Installation and plugin activation

- 1 The plugin will appear in the Lightroom Classic "Plug-in Manager" after the successful installation. (File->Plug-in Manager).
- 2 If the LED next to the plugin is gray, the plugin has to be activated first in the status section.
- 3 In rare cases the plugin won't appear in the "Plug-in Manager" after the installation. In that case you have to add it manually. You do that by clicking on the "Add" button, after which a dialog window will open, where you can select the plugin.



**After the installation you can find the plugin under:**

Mac:

*Library/Application Support/Adobe/Lightroom/Modules*

Windows:

*%appdata%/Adobe/Lightroom/Modules*

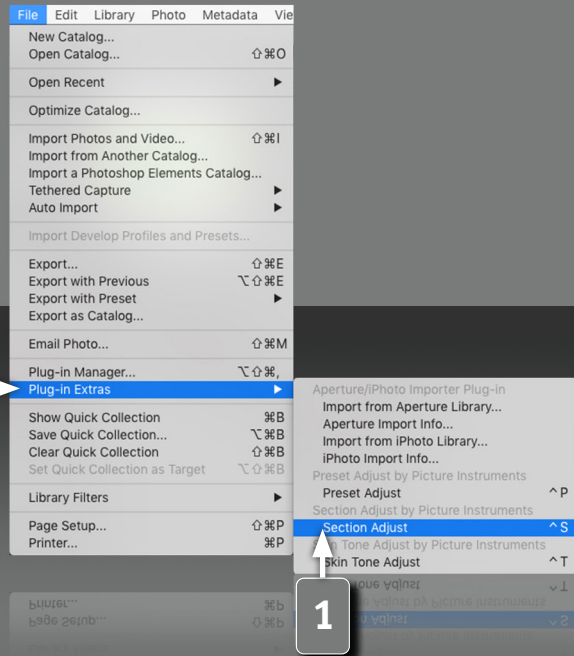
Maybe you have to restart Lightroom.

## License activation

- 4 After the installation and activation of the plugin you have to enter your personal license code in combination with your associated email address. The "Plug-in Manager" can be closed after the successful activation of the license.

# SECTION ADJUST

## Manual



3

## The Section Adjust Plugin

Picture Instruments Section Adjust is a plugin for Lightroom. There are 10 controls that can be used to easily adjust all current Lightroom settings grouped by the lightroom sections. The master control can be used to amplify or soften all of the settings together and the further controls can be used to influence each setting of a whole Lightroom section (for example the tonal values, curves, HSL, etc.). The fine tuning is very easy this way. During the adjustments you can take into account the white balance or you can ignore it.

## Opening the plugin

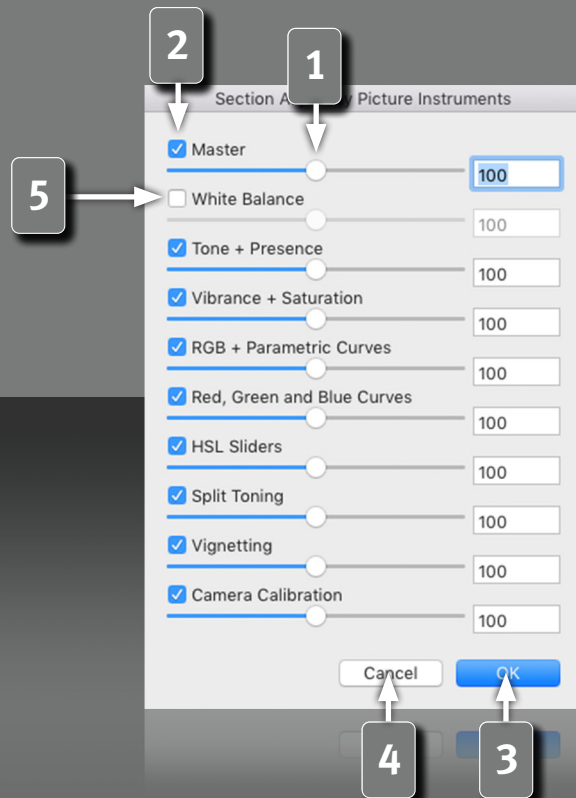
1

The plugin can be used via the shortcut CTRL + s (shortcuts only work on Mac OS X) or via the main Lightroom menu: File-> Plug-in Extras.



# SECTION ADJUST

## Manual



4

## Section Adjust Controls

- 1 The master control of the Section Adjust plugin can be used to amplify or soften all Lightroom settings together. In addition you can adjust each Lightroom section separately via individual controls. The controls of the plugin are arranged in the same order as the different Lightroom sections on the right side (if the use the default Lightroom user interface). All plugin controls use a scale from 0% to 200%. Values over 100% amplify the current Lightroom settings/preset and values under 100% soften them.
- 2 You can lock the different sections from the influence of the master control by deactivating the individual check boxes.
- 1 The master control moves all the other controls by the same value to preserve a previously configured offset between the different sections.
- 3 The changes can be applied by clicking "OK", after all the adjustments were made.
- 4 "Cancel" resets everything to the state before the plugin was opened.
- 5 The check box for the white balance is by default not checked, because the white balance is usually only used to make the picture neutral. If the white balance is needed for the creative picture editing, then you can activate this check box as well.

# Picture Instruments



[www.picture-instruments.com](http://www.picture-instruments.com)